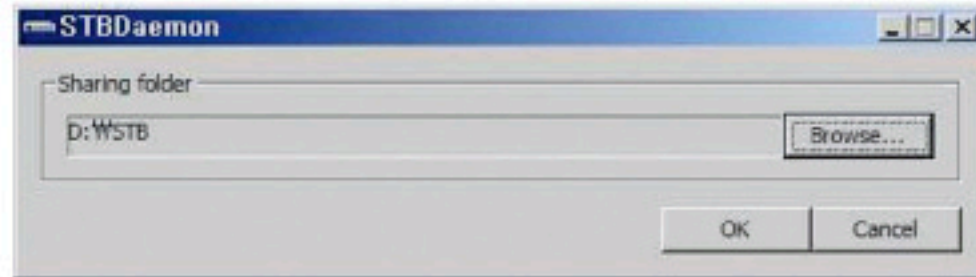


1. Follow these instructions prior to connecting your receiver to your PC:

- Run the PC Tool program before connecting to your PC (STB Daemon).
- Click Browse and select a sharing folder on your PC.



- Press "OK" then select STB Daemon and the window will be hidden. You can still see the icon on the bottom right of the windows screen.



2. Connect an Ethernet cable from your DVR to your network port.

3. Press menu, Select System Settings, Select IP Settings:

- If your Network supports DHCP, IP settings can be allocated automatically by turning DHCP Usage on and pressing the red colored key.

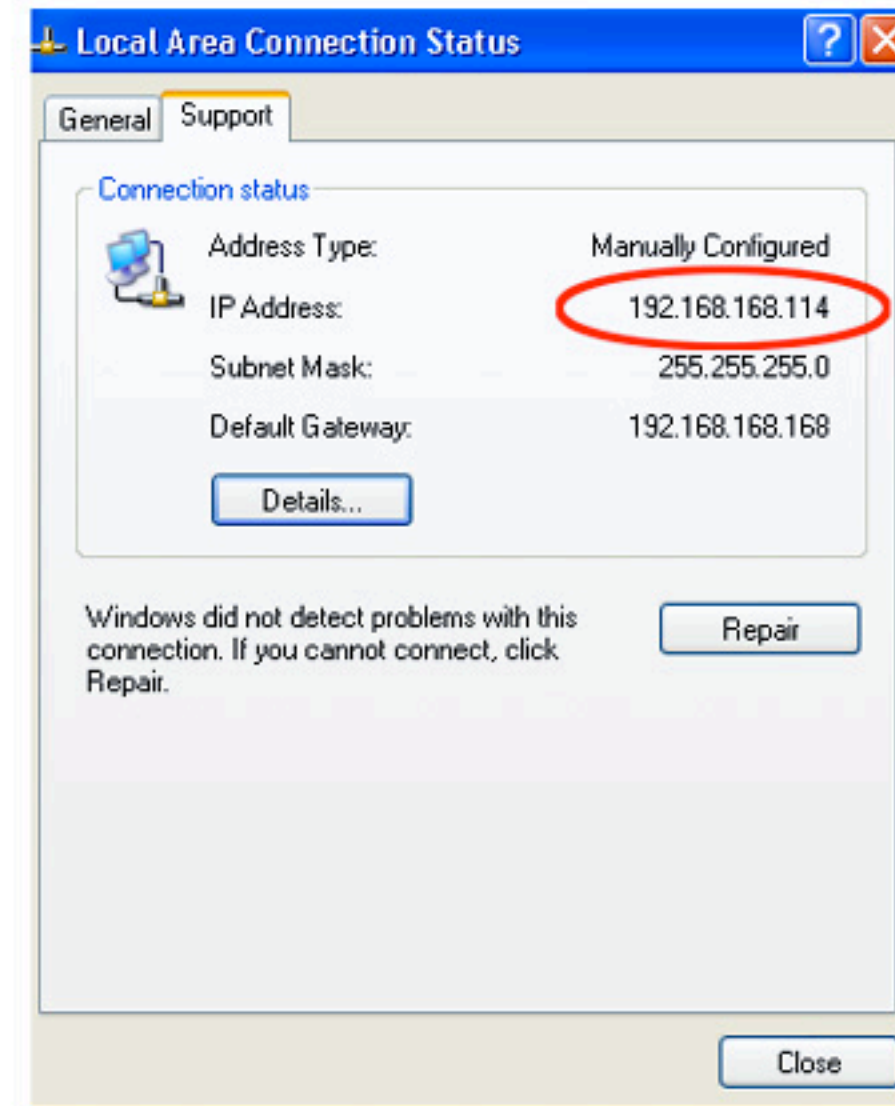


- If your Network does not support DHCP, the IP Address must be entered manually (Static IP). EG. If your computers IP is **192.168.168.114**, you can allocate the unit an IP of **192.168.168** any other number not used on your network.

Click the network icon on the bottom of your desktop



Now Select the Support Tab, you can then locate your IP Address



- 4. You can now go into the Storage, File Manager menu and press the yellow colored key to type in the IP address of the computer with STB Daemon running.**