

Connecting your SRT 7000 to a PC via your Network

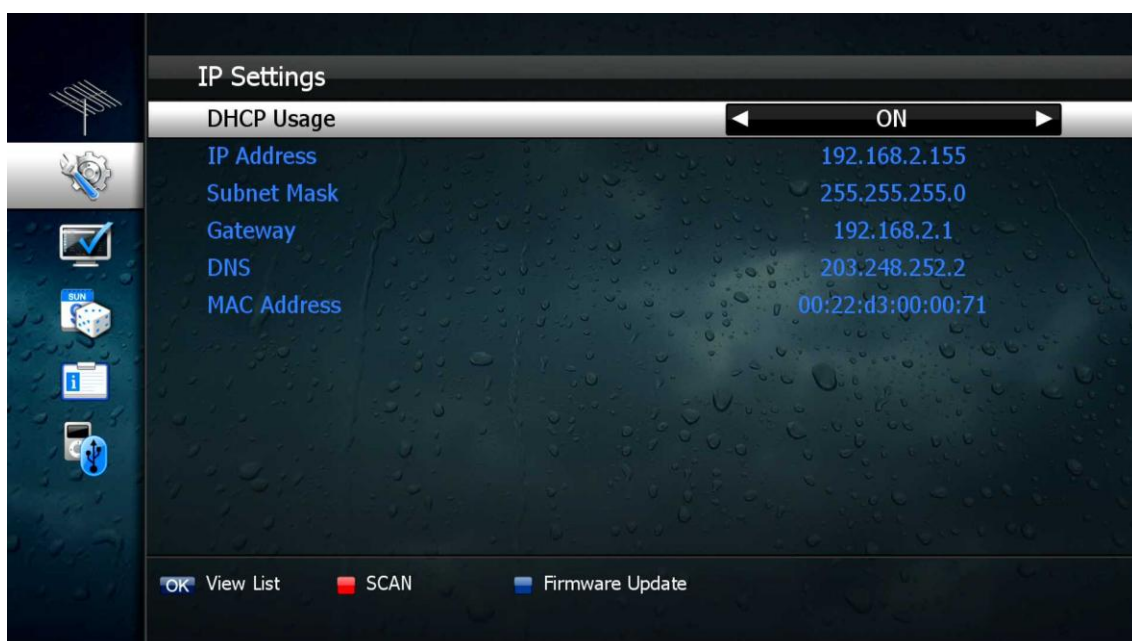
1. Follow these instructions prior to connecting your receiver to your PC:
 - a) Run the PC Tool program before connecting to your PC (STB Daemon), this can be downloaded from www.strong.com.au/faq_tech.html .
 - b) Click Browse and select a sharing folder on your PC.



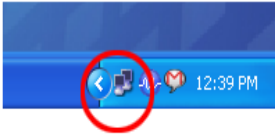
- c) Press "OK": then select STB Daemon and the window will be hidden. You can still see the icon on the bottom right of the windows screen.
2. Connect and Ethernet cable or wireless USB dongle from your DVR to your network port



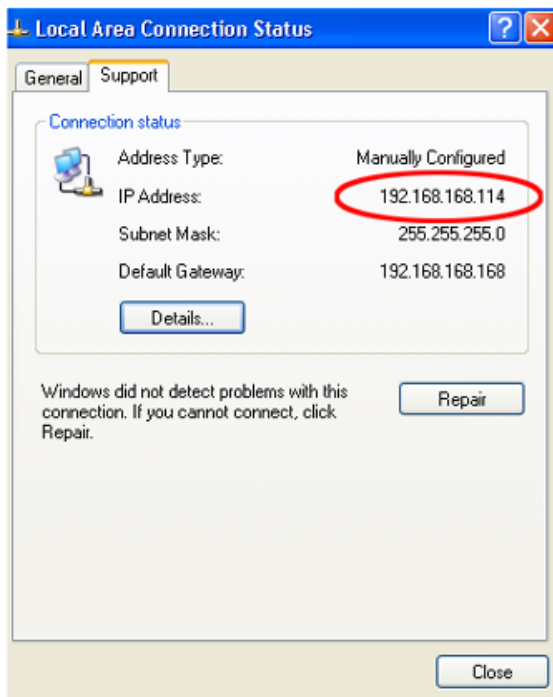
3. Press Menu, select system settings, select IP setting:
 - a) Depending on your connection select either Ethernet or Wi Fi.
 - b) If your Network supports HDCP, IP settings can be allocated automatically by turning DHCP Usage on and pressing the red coloured key.



- c) If your network does not support DHCP, the IP address must be entered manually (Static IP) eg; If your computers IP Address is **192.168.168.114**, you can allocate the unit an IP **192.168.168** any other number not used on your network.
- d) Click the network icon on the bottom of your desktop



- e) Now select the Support Tab, you can allocate your IP Address



- 4. You can now go into Media Manager, then File Manager menu (on your DVR) and press the yellow colored key (on remote) to type on the IP address of the computer with STB Daemon running.