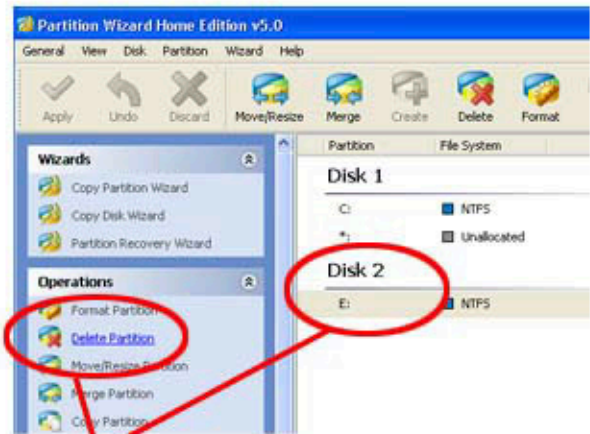
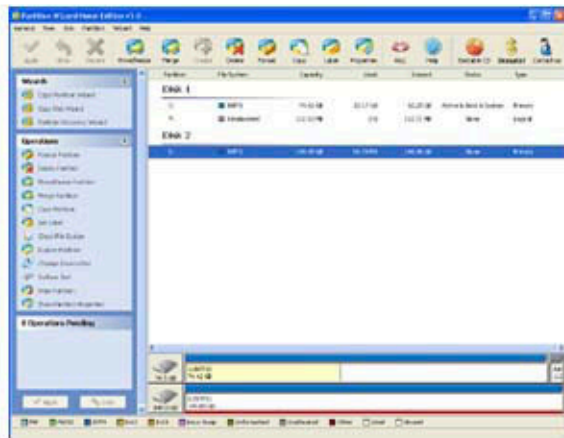


Turn Your Digital TV Receiver into a Digital Video Recorder (DVR) with a USB External Hard Drive

1. Visit the active link on the strong.com.au website and download Partition Wizard Home Version 5.0 and load onto PC or visit <http://www.partition.com/download.html>.
2. Connect the External Hard Drive to the USB port on the computer.
3. Open Partition Wizard Home

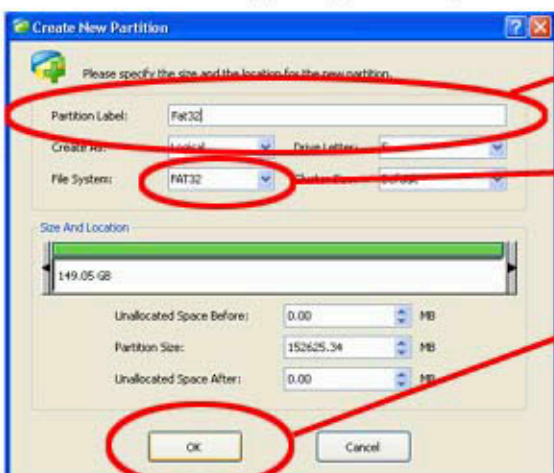


4. Select the USB Drive (usually comes up as Disk 2 - DO NOT format Disk 1 or C Drive; this is your active drive). Then select Delete Partition.
5. The Hard Drive will then show as unallocated



Partition	File System	Capacity	Used
Disk 1			
C:	NTFS	74.42 GB	32.17 GB
*:	Unallocated	112.31 MB	0 B
Disk 2			
*:	Unallocated	149.05 GB	0 B

6. Then Select Create Partition
7. A Screen will appear, select partition label, ie; Fat32



8. Then select File System Type, ie; FAT32

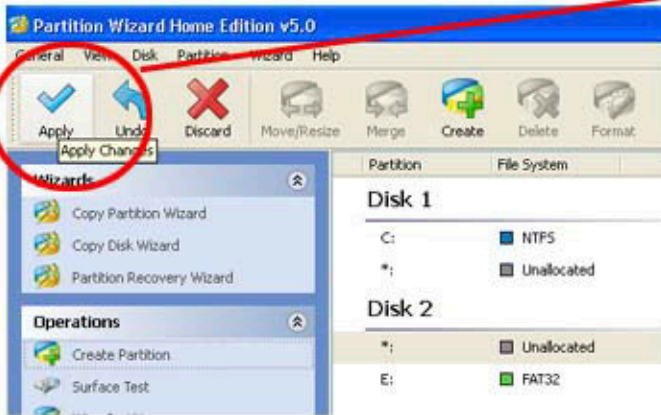
9. Then Press OK

Turn Your Digital TV Receiver into a Digital Video Recorder (DVR) with a USB External Hard Drive

10. Your Hard Drive will now be shown as Fat32

Disk 1							
C:	NTFS	74.42 GB	32.17 GB	42.25 GB	Active & Boot & System	Primary	
*:	Unallocated	112.31 MB	0 B	112.31 MB	None	Logical	
Disk 2							
*:	Unallocated	7.88 MB	0 B	7.88 MB	None	Logical	
E:Fat32	FAT32	149.04 GB	37.31 MB	149.00 GB	None	Logical	

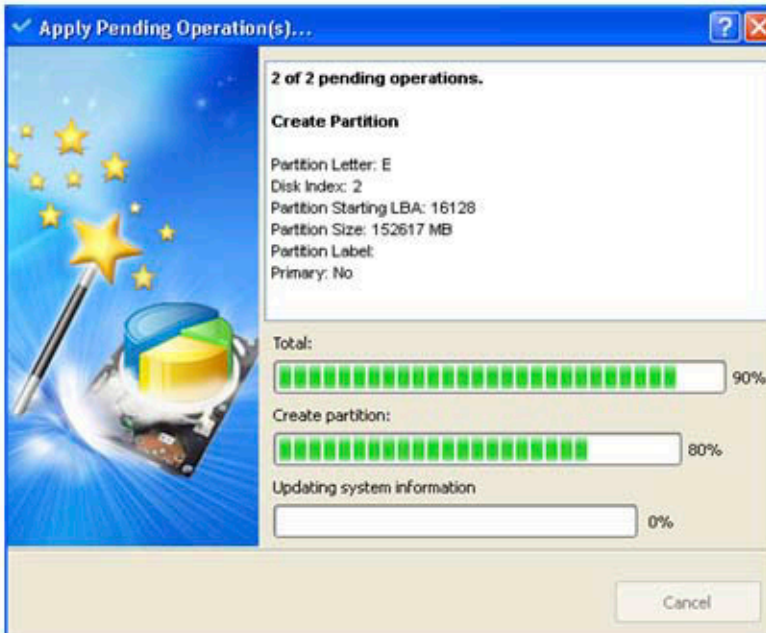
11. You must now Select Apply to save the changes



12. You will see the following warning appear, press yes



13. Partition Wizard will then apply changes and format your Hard Drive



14. When finished a final message will appear

15. Congratulations your hard drive is now ready to be connected to your receiver

