

Getting started with STRONG SRT BT3  
Mobile Bluetooth Speaker and Speakerphone



- Features**
1. Status indicator (Power On/Off Battery and Pairing)
  2. Power On/Off
  3. Micro-USB Charging Port
  4. Auxiliary-Input Jack
  5. Previous Track
  6. Play/Pause or Microphone Mute/Unmute(in-call)
  7. Next Track
  8. Microphone
  9. Volume Down
  10. Pair or Phone
  11. Volume Up

**Table of Toxic and Hazardous Substances/Elements and their Content**

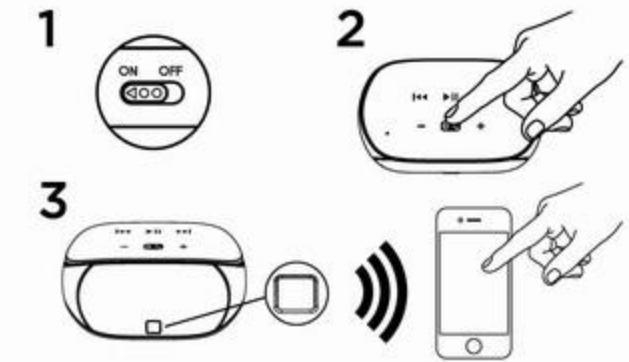
| Ingredients       | BP | Hg | Cd | Cr(VI) | PBB | PBDE |
|-------------------|----|----|----|--------|-----|------|
| Cable             | X  | O  | O  | O      | O   | O    |
| PWAs              | O  | O  | O  | O      | O   | O    |
| Plastic Parts     | O  | O  | O  | O      | O   | O    |
| Wood parts        | X  | O  | O  | O      | O   | O    |
| Metallic elements | X  | O  | O  | O      | O   | O    |

O stands for this toxic and hazardous content in homogeneous material is under the SJ/T11363-2006 Standards limits  
X stands for this toxic and hazardous content in homogeneous material is beyond the SJ/T11363-2006 Standards limits  
Under the ingredients with "X" in the form all are up to ROHS  
"On January 17,2003 the European parliament and the council announce electronic equipment in limiting the use of certain hazardous substances directive 2002/95/EC"  
Note: the environmental protection using period reference standard depends on the product of the regular work temperature and humidity conditions.

**If pairing with a computer, specify the STRONG SRT BT3 as the audio output**

Compatible with-

- iPhone/iPad/iPod Touch
- Bluetooth enabled mobile phones
- Laptops
- Tablets
- Any Audio devices with audio outputs (separate cables not supplied and may be required to connect to all audio devices)



**Setup**

To play audio from a Bluetooth device, you need to pair the device with the speaker first. You can pair up to eight devices.

1. On your Bluetooth device, turn on Bluetooth and scan for devices in its Bluetooth menu.

2. Turn on the speaker. When powering up for the first time, the speaker is discoverable for 2 minutes and is ready for pairing. The status indicator blinks Red and Blue.
3. When "SRT BT3" appears in the device list of your Bluetooth device, select the SRT BT3. (If a pass code is requested, enter 0000.)The Bluetooth status light turns solid Blue after pairing is established. The speaker is now ready to play music.

Note: If pairing times out (the Bluetooth status light stops blinking Red and Blue),touch and hold the Pair or Phone symbol until the Bluetooth status light blinks red and blue again. Repeat step 3.

**Pairing additional Bluetooth devices**

Press and hold the Pair or Phone button until the Bluetooth status light blinks Red and Blue. Repeat steps 1 and 3 above.

**Operation**

Once the SRT BT3 is paired with your Bluetooth device you can begin music playback by either pressing play on your device or touching the play symbol on the top of the SRT BT3

The SRT BT3 has an illuminated touch sensitive top panel which also allows the following controls-

- Touch this symbol to increase the volume of the audio
- Touch this symbol to decrease the volume of the audio

- Touch this symbol to Play/Pause audio from Bluetooth connected device
- Touch this symbol to skip to the next track from Bluetooth connected device
- Touch this symbol to skip to the previous track from Bluetooth connected device
- Touch this symbol to answer/end a call while listening to audio from a Bluetooth connected phone (refer to speakerphone section for more information)

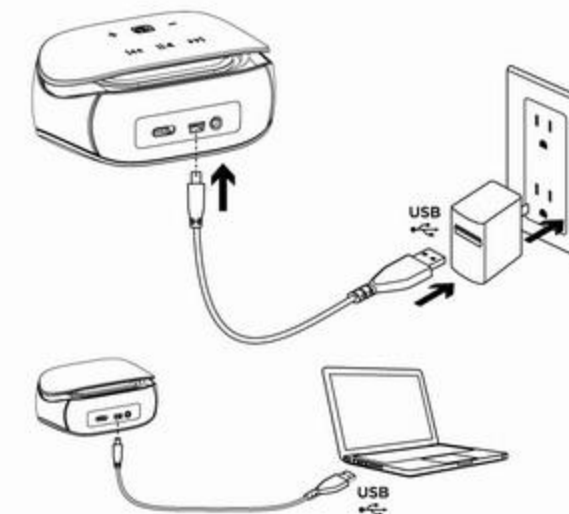
**Speakerphone**

The SRT BT3 has an inbuilt speakerphone function for use with Bluetooth enabled mobile phones. Once you have paired your phone via Bluetooth following the steps outlined in the set up menu, the SRT BT3 can be used as a speaker phone even when listening to audio from your phone.

When an incoming call is received the SRT BT3 will automatically lower the audio volume and your phones ringtone will be heard via the speaker.

Touch the phone symbol to answer the call. Sound from the call will be heard via the speaker and the inbuilt micro phone will relay your speech to the caller.

Touch the phone symbol again to end the call. Playback of audio from your phone will automatically restart once call is ended.



**Charging**

- Approximately once a month it is recommended to fully charge the speaker (charge time 4 hours).
1. Plug the charging cable into the speaker's charging Mini USB Port. The USB plug can now be plugged into any device or AC Adaptor with a USB port for charging. (AC Adaptor not supplied)

**Status indicator:**

If the bluetooth speaker is powered on and connect to other device:  
Charging = Solid blue and red  
Fully charged = Solid blue  
Low battery = Red blink one time  
Very low battery = Power off

If the bluetooth speaker is powered off:  
Charging = Solid red  
Charged fully = Red turn off

**Battery saving**

The speaker enters power saving mode if no audio is played for 30 minutes. Slide the power switch Off and then On to wake the speaker up to begin playing audio again.

**Troubleshooting**

**The speaker doesn't work or it won't pair**

- Try moving your device closer.
- Is the speaker turned on and charged?
- Turn the speaker Off and then On to wake it up from battery saving mode.
- Is Bluetooth enabled on your device or computer?
- Try repeating the setup procedure in this guide or pair with a different Bluetooth device.
- The speaker plays music from only one device at a time. Unpair the device not being used. (Refer to your device documentation for help.) Pair a new device using the setup procedure.
- If pairing with a computer, specify the SRT BT3 as the audio output device on the computer.